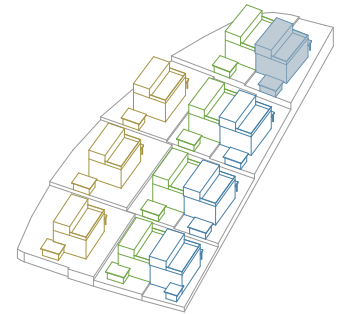
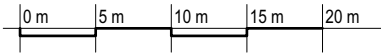
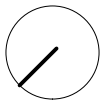


**Masstab
1:500**

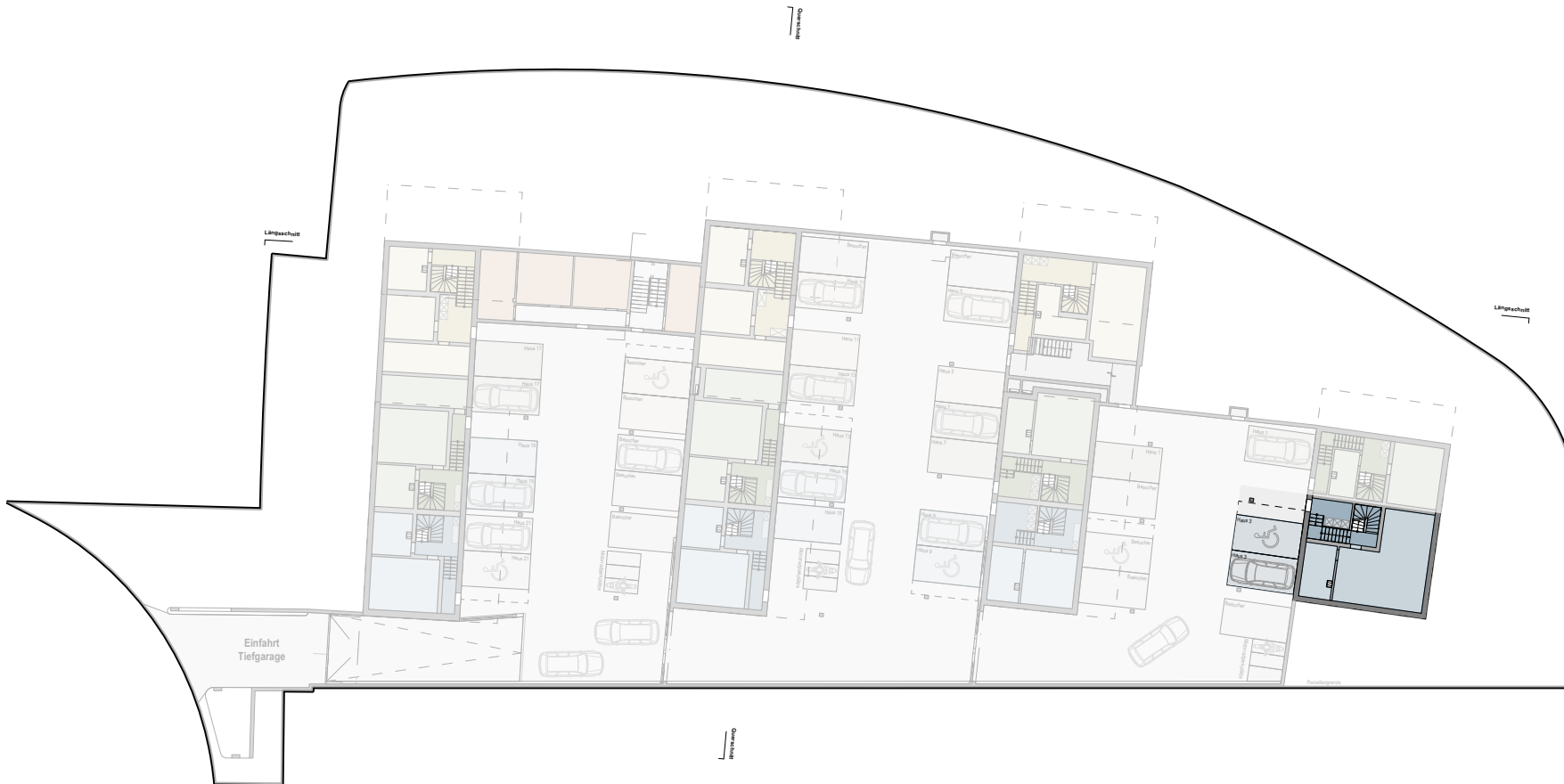


**EG Umgebung Talblickstrasse 3
Doppeleinfamilienhaushälfte, 7.5-Zimmer**

Wohnüberbauung Talblick | Talblickstrasse | 8492 Wila | 06.04.2024



**Masstab
1:500**

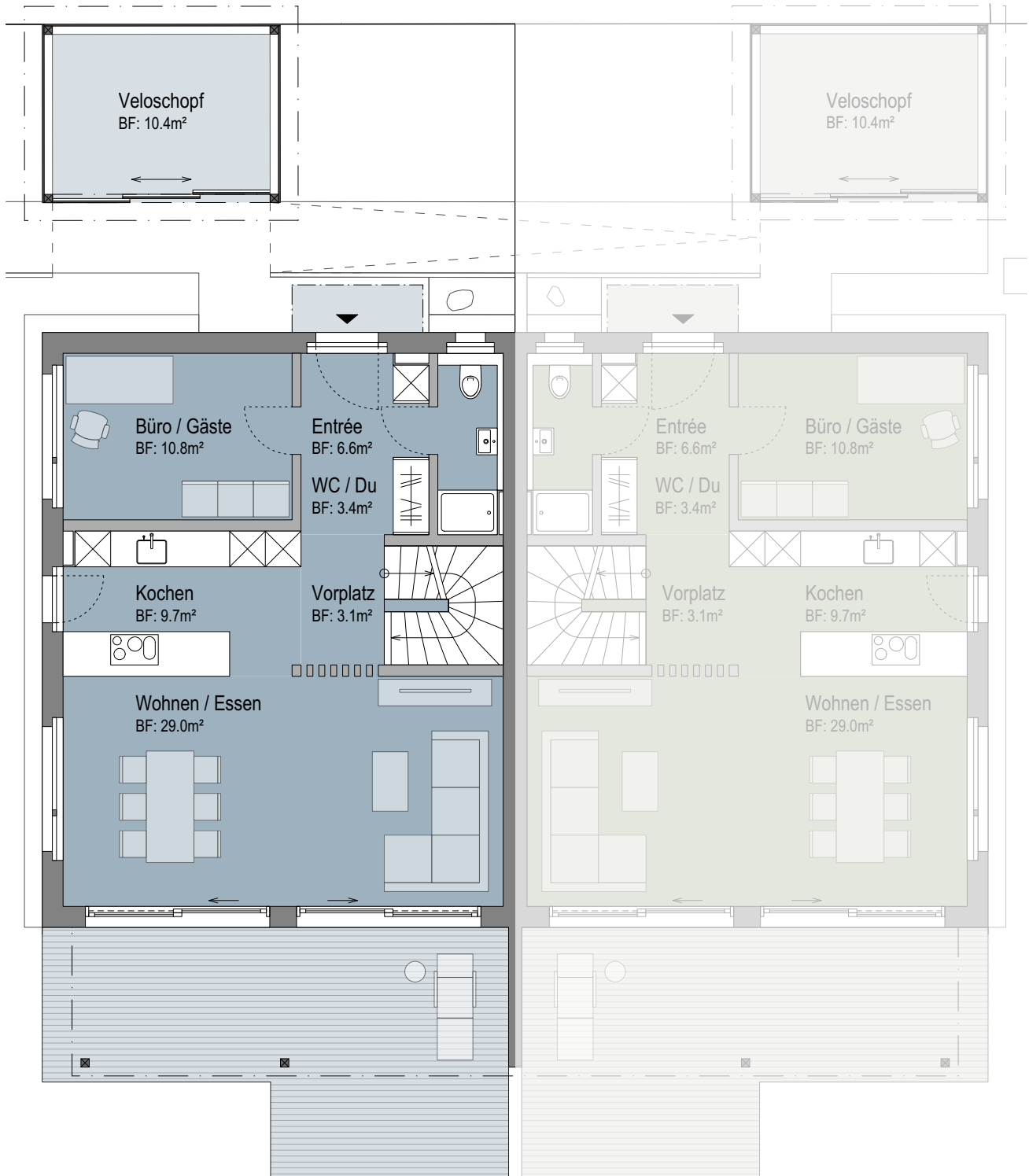


**Untergeschoss Talblickstrasse 3
Doppeleinfamilienhaushälfte, 7.5-Zimmer**

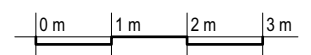
Wohnüberbauung Talblick | Talblickstrasse | 8492 Wila | 06.04.2024

Bruttowohnfläche ca. 68.3m²
Nettowohnfläche ca. 62.2m²

Bruttowohnfläche ca. 68.3m²
Nettowohnfläche ca. 66.2m²

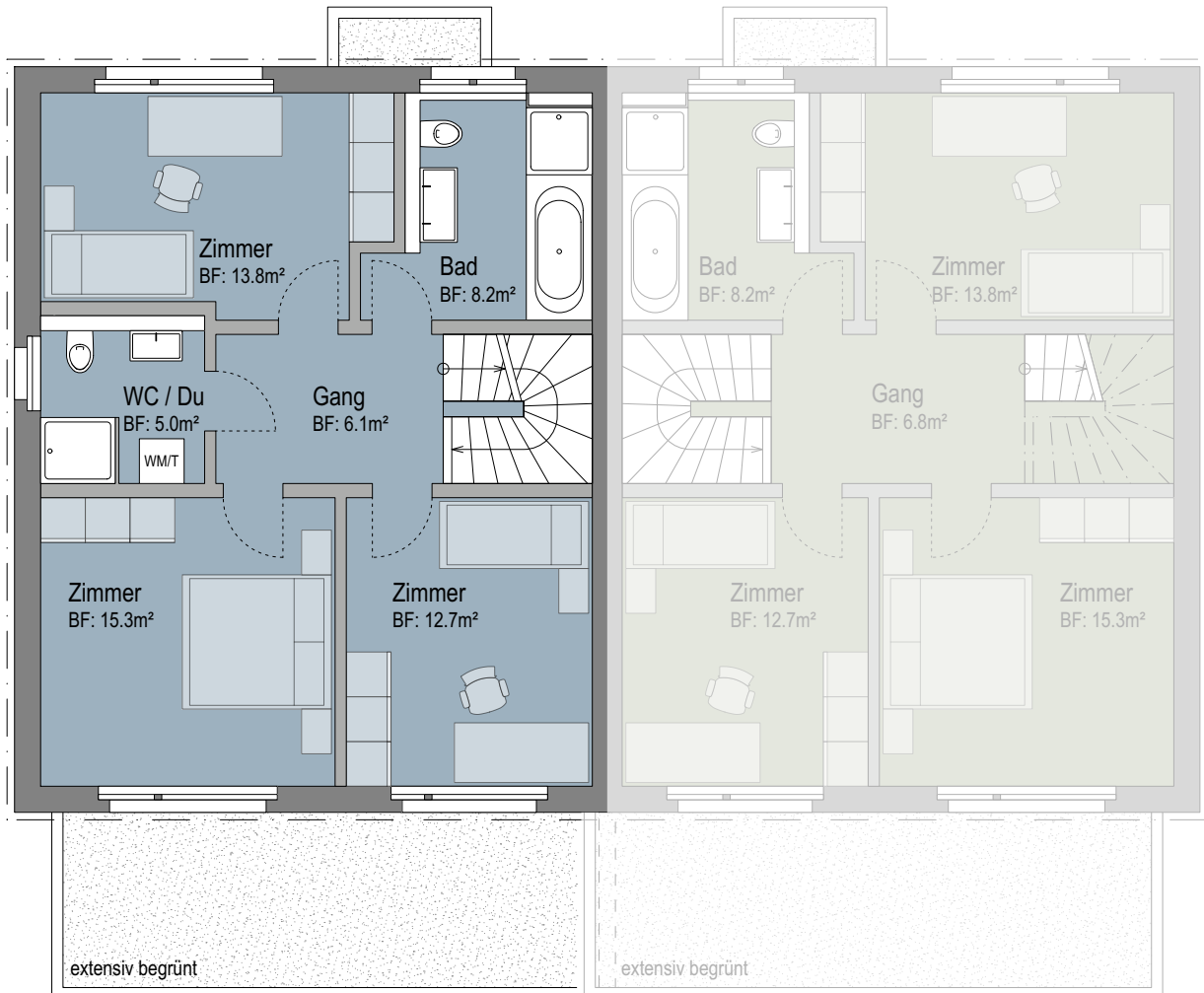
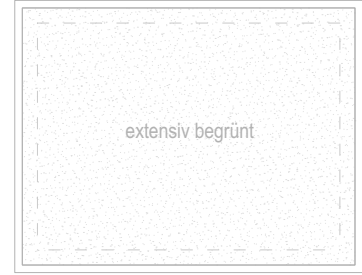
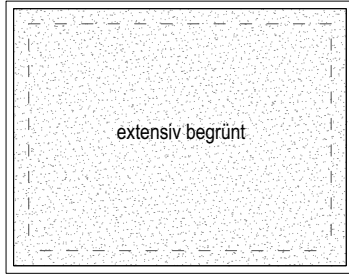


Erdgeschoss Talblickstrasse 3
Masstab 1:100

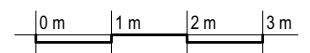


Bruttowohnfläche ca. 68.3m²
Nettowohnfläche ca. 61.1m²

Bruttowohnfläche ca. 68.3m²
Nettowohnfläche ca. 63.4m²

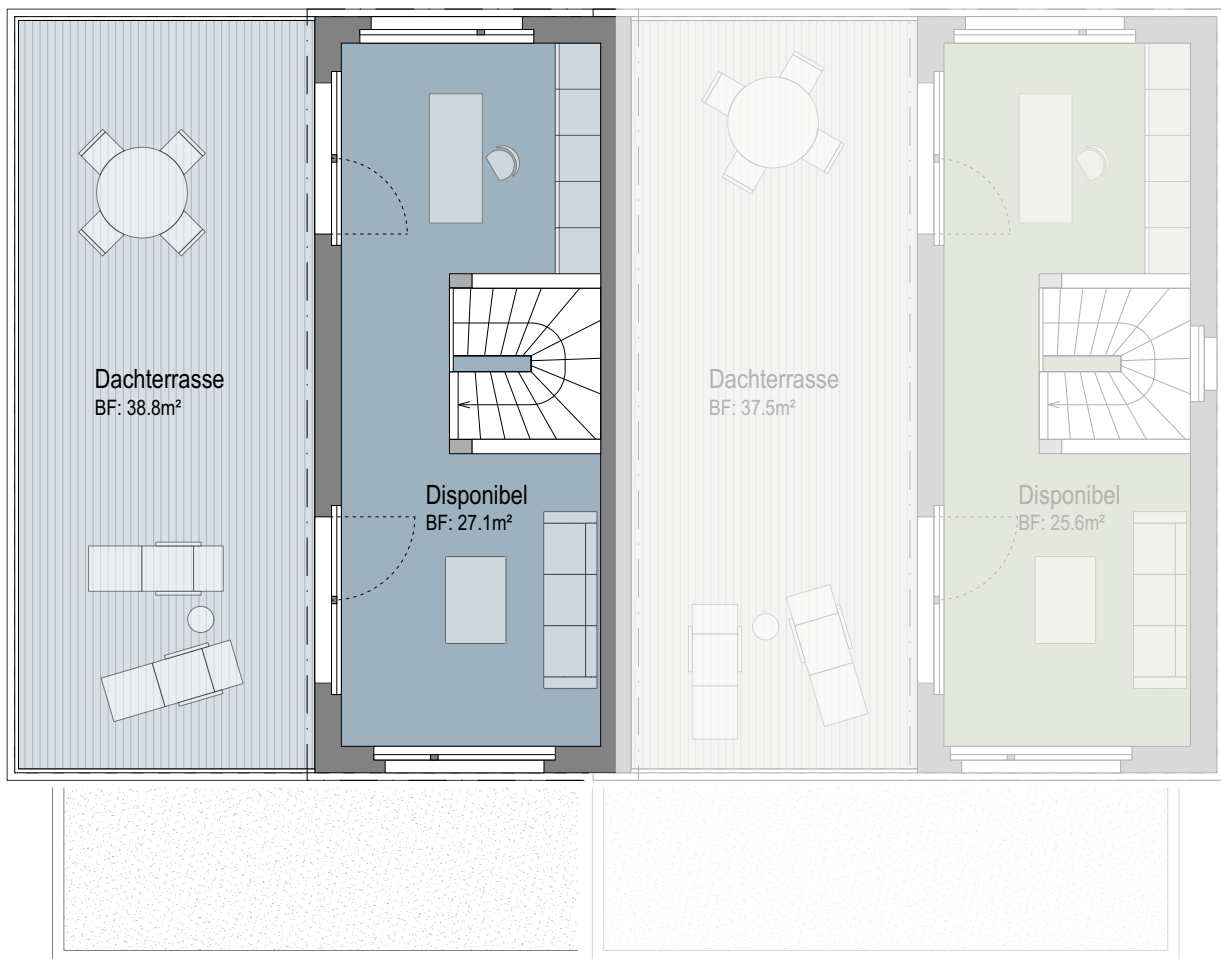


Obergeschoss Talblickstrasse 3
Masstab 1:100

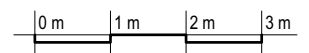






Bruttowohnfläche ca. 31.9m²
Nettowohnfläche ca. 27.1m²

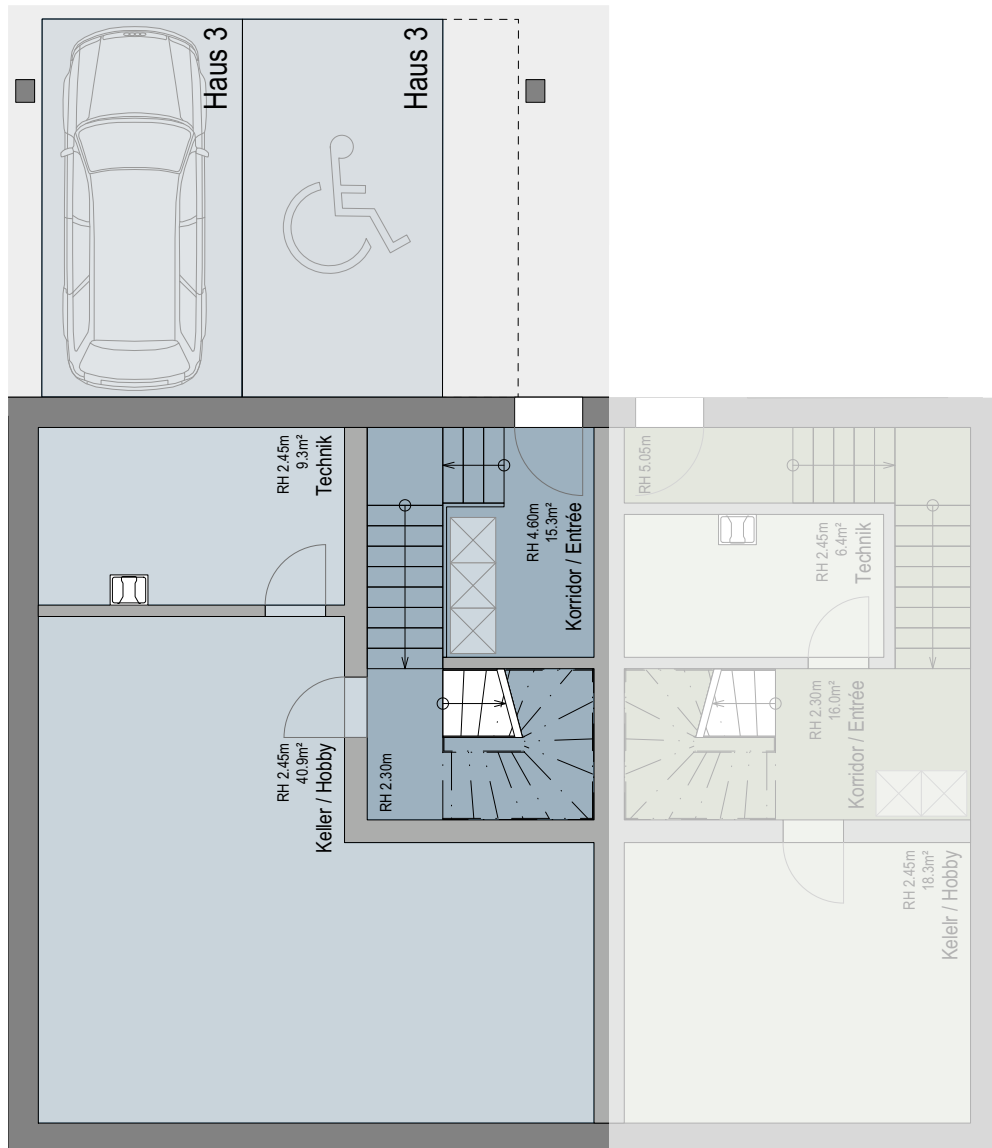
Bruttowohnfläche ca. 30.3m²
Nettowohnfläche ca. 27.7m²



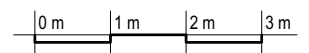
Dachgeschoss Talblickstrasse 3
Masstab 1:100

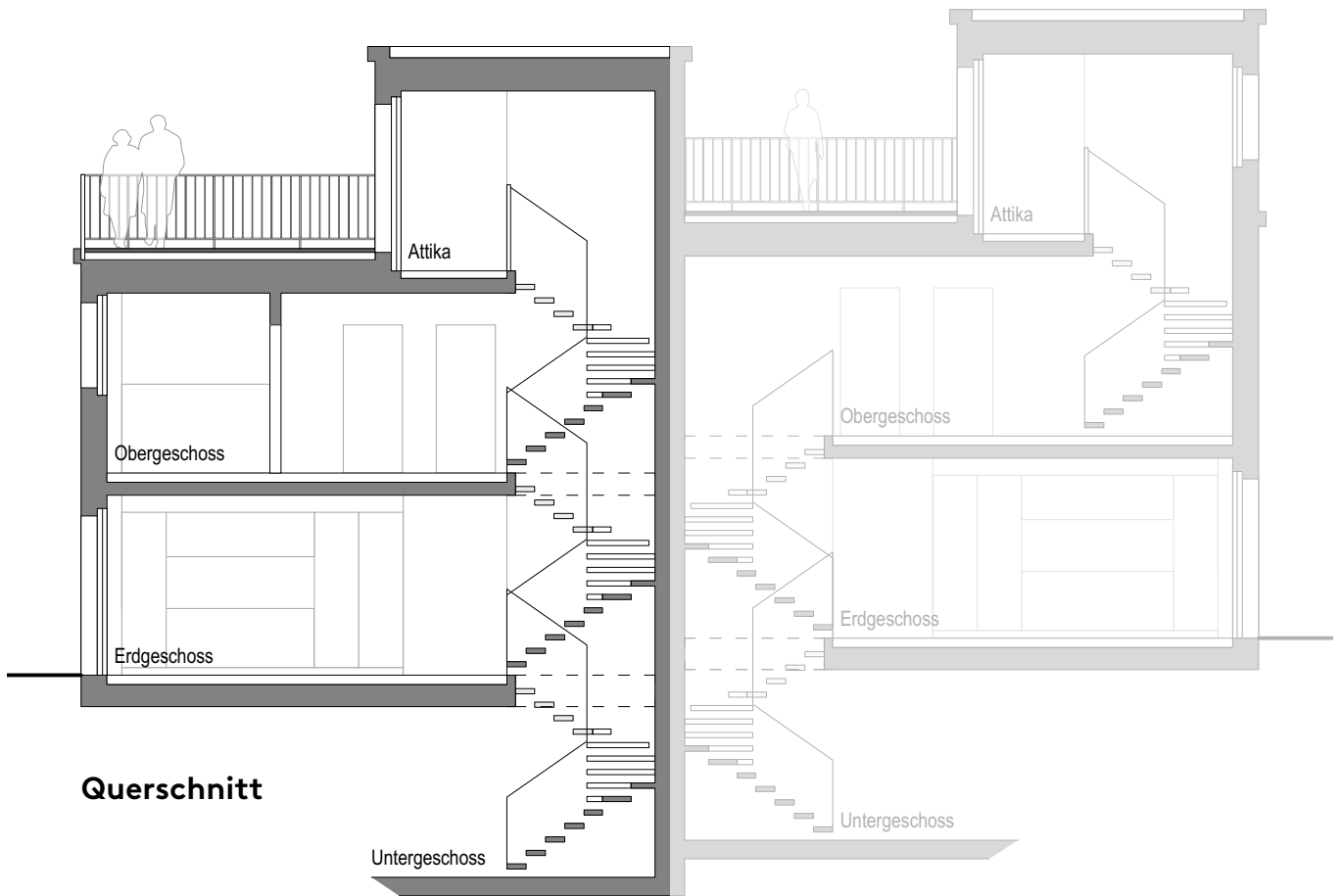


	Bruttowohnfläche	ca. 31.9m ²		Bruttowohnfläche	ca. 30.3m ²
	Nettowohnfläche	ca. 15.3m ²		Nettowohnfläche	ca. 27.7m ²

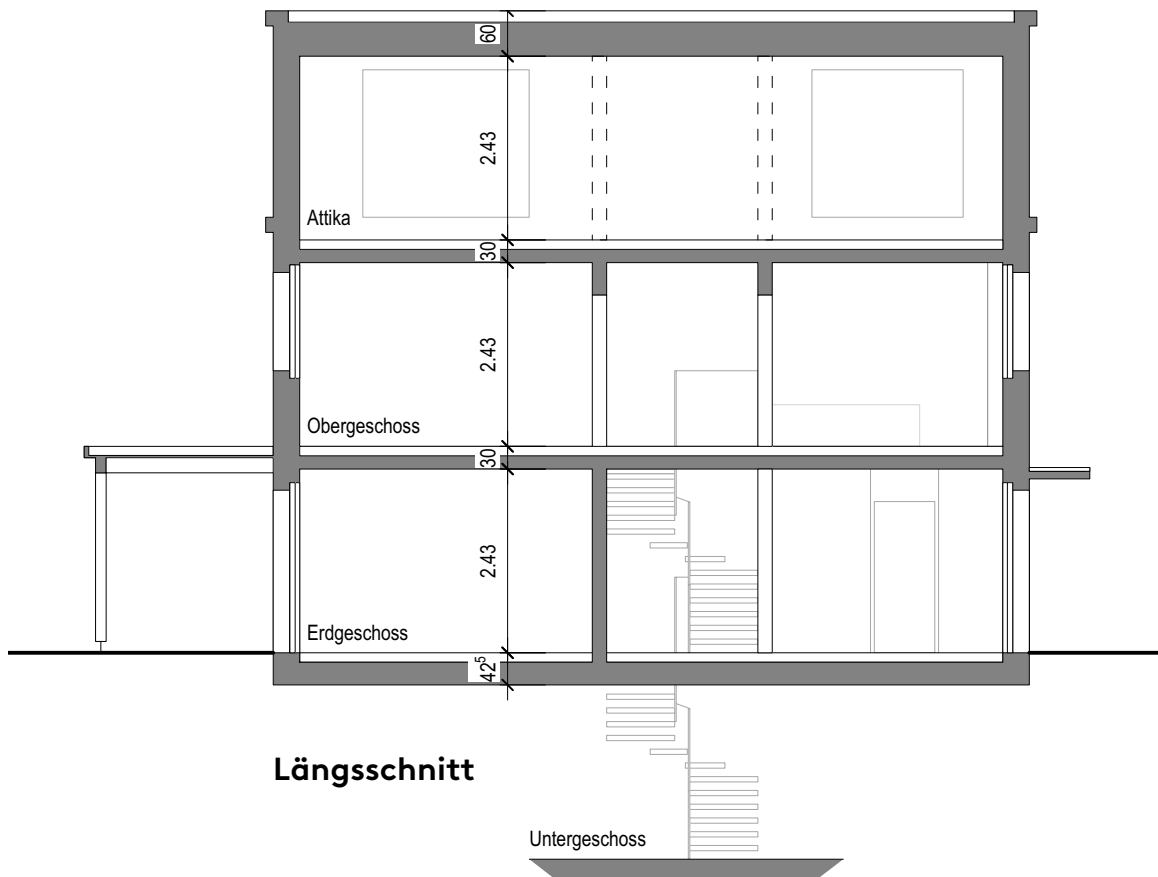


Kellergeschoss Talblickstrasse 3
Masstab 1:100





Querschnitt



Längsschnitt

**Schnitte Talblickstrasse 3
 Masstab 1:100**

